

Features

- Output Freq. : 15 GHz
- Output Power : +12 dBm
- Harmonics : -30 dBc
- Spurious : dBc
- RoHS and REACH Compliant

Electrical Specifications

Description	Units	Minimum	Typical	Maximum
Output Frequency	GHz		15	
Freq. Accuracy	ppm		/	
Freq. Stability	ppm/°C			
Mechanical Tuning	MHz			
Output Power	dBm	+12		
Power Variation	dB			
Phase Noise@10Hz	dBc/Hz			
Phase Noise@100Hz	dBc/Hz			
Phase Noise@1KHz	dBc/Hz			
Phase Noise@10KHz	dBc/Hz			
Phase Noise@100KHz	dBc/Hz			
Phase Noise@1MHz	dBc/Hz			
2nd Harmonics	dBc			-30
Spurious	dBc			
Pushing@+12±0.5V	MHz / V			
Pulling@VSWR 2.0: 1	MHz			
Supply Voltage	V	+12		
Current	mA		75	
Operating Temp.	°C	-30		+70

Note

- Electronic Specification Note : Values at 25deg , sea level. Test indicators will deteriorate at high and low temperature ;

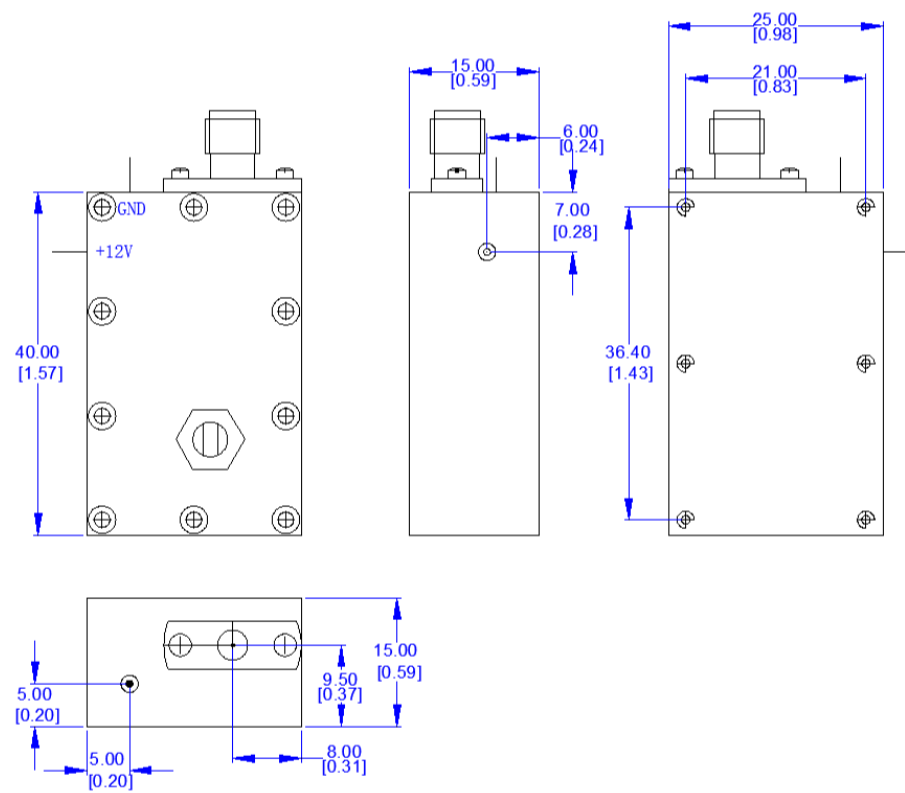
Mechanical Specifications

Dimension L*W*H	40*25*15 mm
Output Connectors	SMA-Female
Weight	TBD g
Finishing	

Compliance Certifications

RoHS Compliant	✓
REACH Compliant	✓

CAD Drawing



Dimensions are in mm [Inches]
Tolerances : Outline drawing: ±0.2 [0.008]
Hole: ±0.2 [0.008]