

Features

- Small Signal Gain 16dB
- Low Gain Flatness
- Input VSWR 2.0
- Output Power 23dBm
- RoHS and REACH Compliant

Electrical Specifications

Description	Units	Minimum	Typical	Maximum
Freq. Range	GHz	2		18
Small Signal Gain	dB	16		
Gain Flatness	dB			±1
Noise figure	dB		7.0	
Output Power @P1dB	dBm	23		
Input VSWR	: 1			2.0
Output VSWR	: 1			
OIP3	dBm		30	
Reverse Isolation	dB	-		
Spurious	dBc	-		
Harmonics	dBc			
TTL Control				
TTL Switching Time	us		-	
Supply Current (Vcc=+15V)	mA		700	
Operating Temp.	°C	0		+80

Special Requirements

Note

- Electronic Specification Note : Values at 25deg , sea level. Test indicators will deteriorate at high and low temperature ;
- ESD sensitive material , Transport material in approved ESD bags. Handle only in approved ESD workstation;
- Providing effective cooling measures and electrostatic protection;
- If the product is damaged due to over-drive, no-load, over-temperature, over-current and static electricity in use. Customer needs to pay for the cost of maintenance.

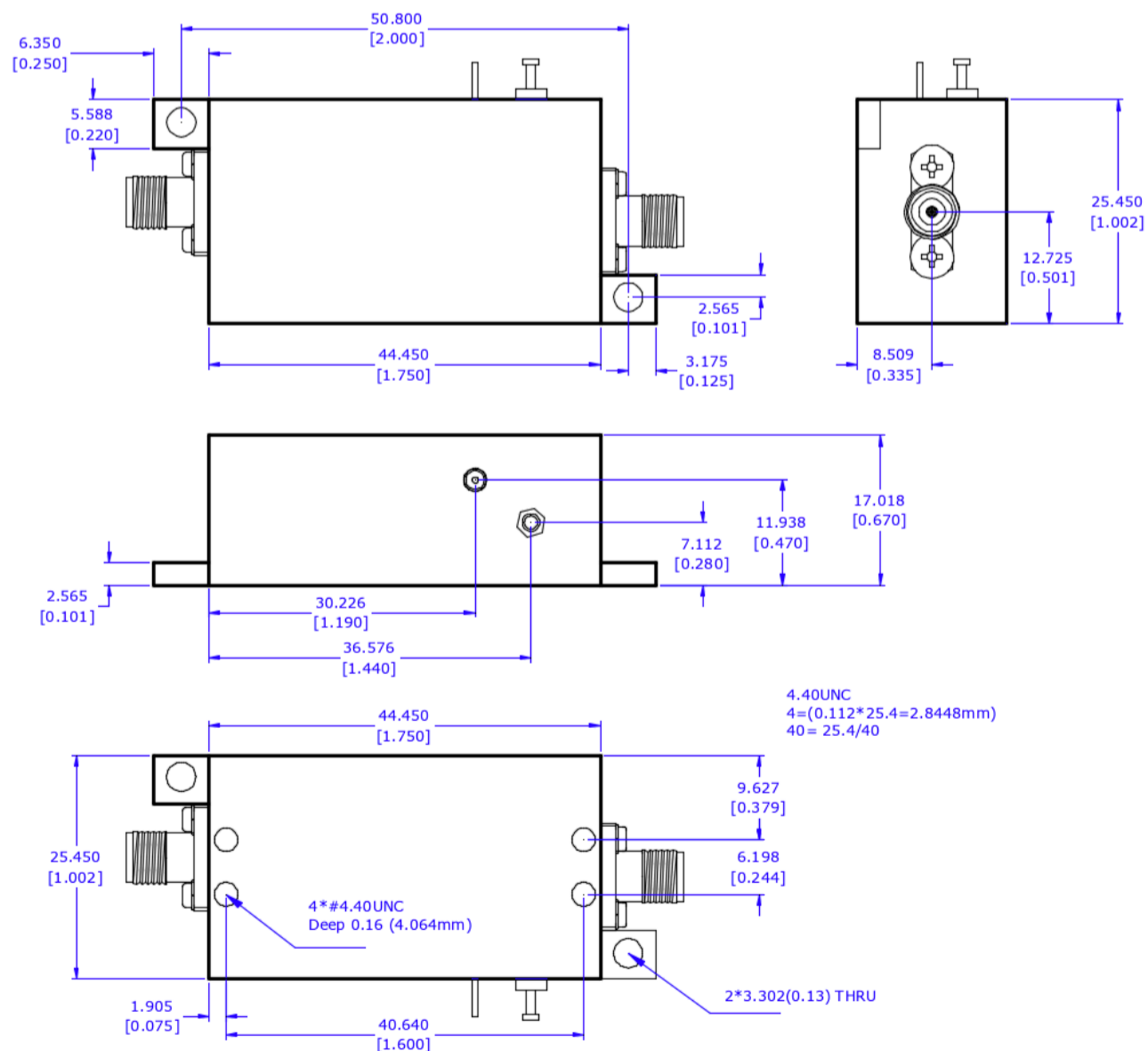
Mechanical Specifications

Dimension L*W*H	35*35*16 mm
Input Connector	SMA-Female Stainless Steel
Output Connector	SMA-Female Stainless Steel
Weight	TBD g
Finishing	Nickel Plated
Environment	X

Compliance Certifications

RoHS Compliant	✓
REACH Compliant	✓

CAD Drawing



Dimensions are in mm [inches]

Tolerances : Outline dimensioning: ± 0.2 [0.008]

Hole: ± 0.1 [0.008]